

# Butte County Fire Safe Council

*Serving Butte County since 1998*



## **Building Industry Stakeholder Meeting**

*Taylor Nilsson - Executive Director*

*Lauren de Terra – Director of Community Engagement*



# A Few Fun Facts About Us

- 501 © 3 Non-Profit
- Currently 39 staff members
- Founded in 1998
- We are an “umbrella” for local Fire Safe Councils





# Mission

Our mission is to provide safety in Butte County through wildfire hazard education, mitigation and wildfire recovery.

# Vision

Our vision is to create communities within a landscape that are resistant and resilient to the devastating impacts of wildland fires.

# Values

We value integrity, respect, safety, fun, positive experiences and effectiveness as we collaborate with partners, volunteers and staff to make a fire safe community.

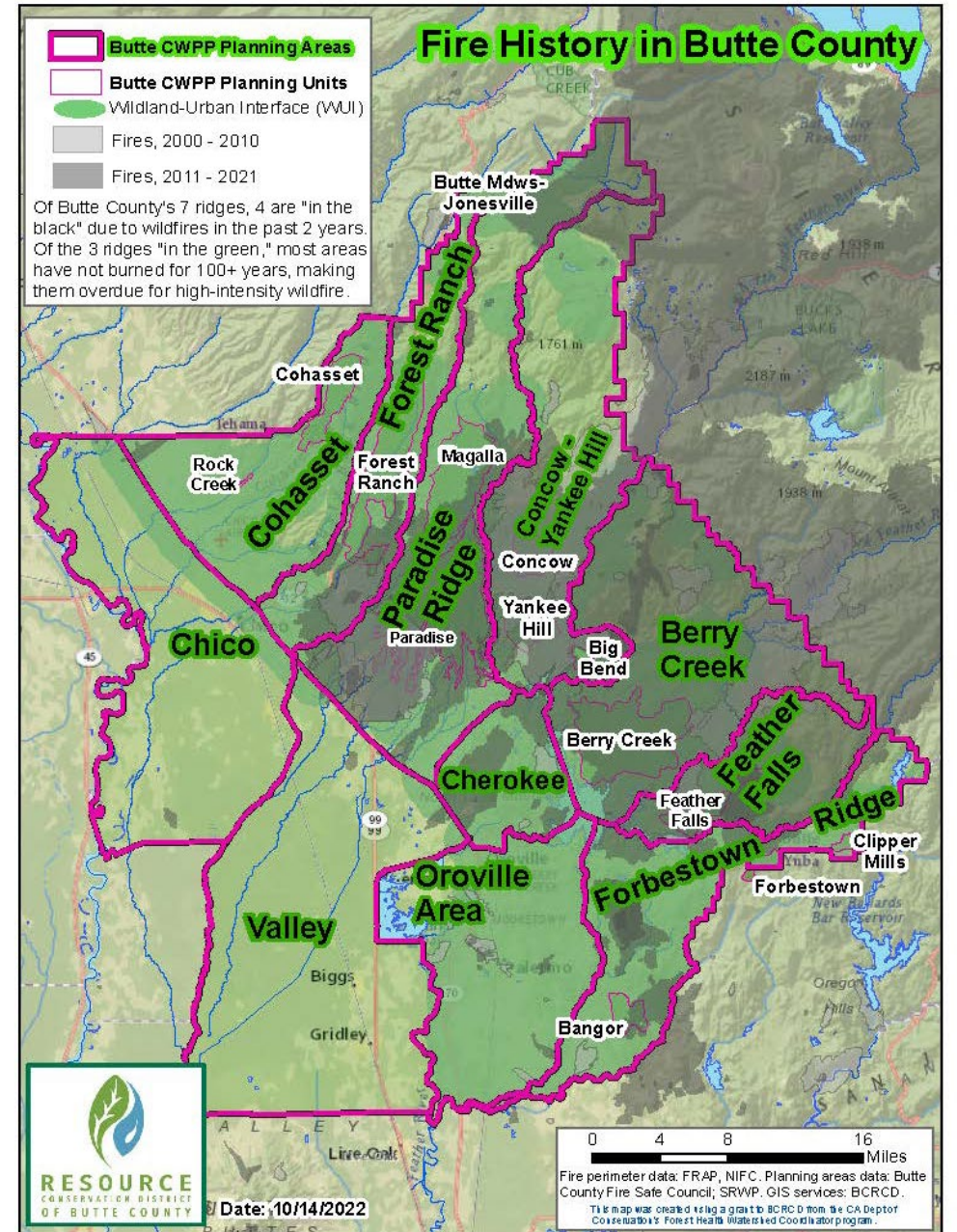


# **Today's Topics**

- **The problem we're solving**
- **Programs and Projects on the Ridge**
- **Education**
- **Firewise USA Communities**



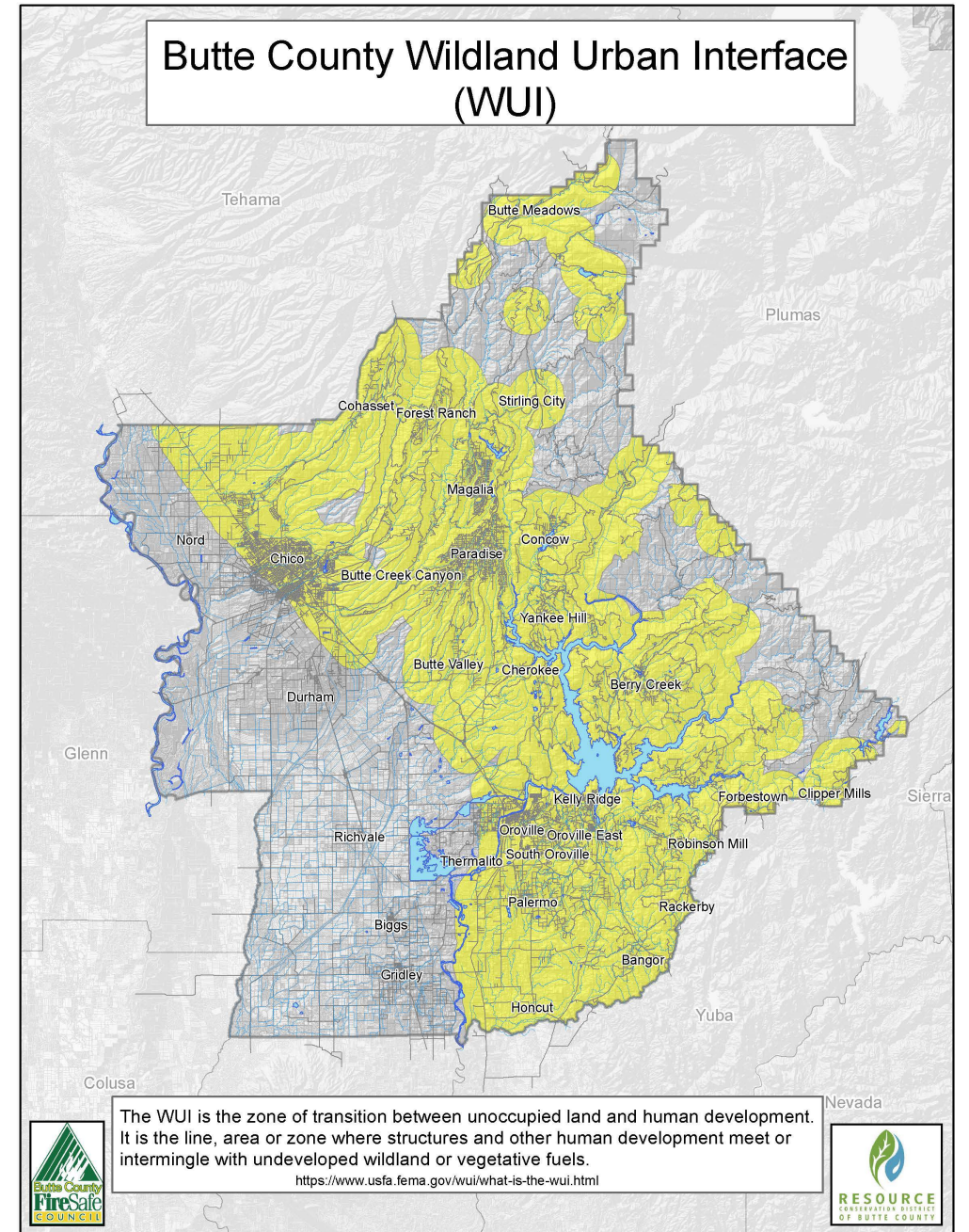
# The Problem We're Solving





# Wildland Urban Interface

Total Acres burned in WUI	345,614
Total Acres in WUI	607,496
% burned	57
Total Acres burned in Butte County	494,538
Total Acres in Butte County	1,073,359
% burned	46



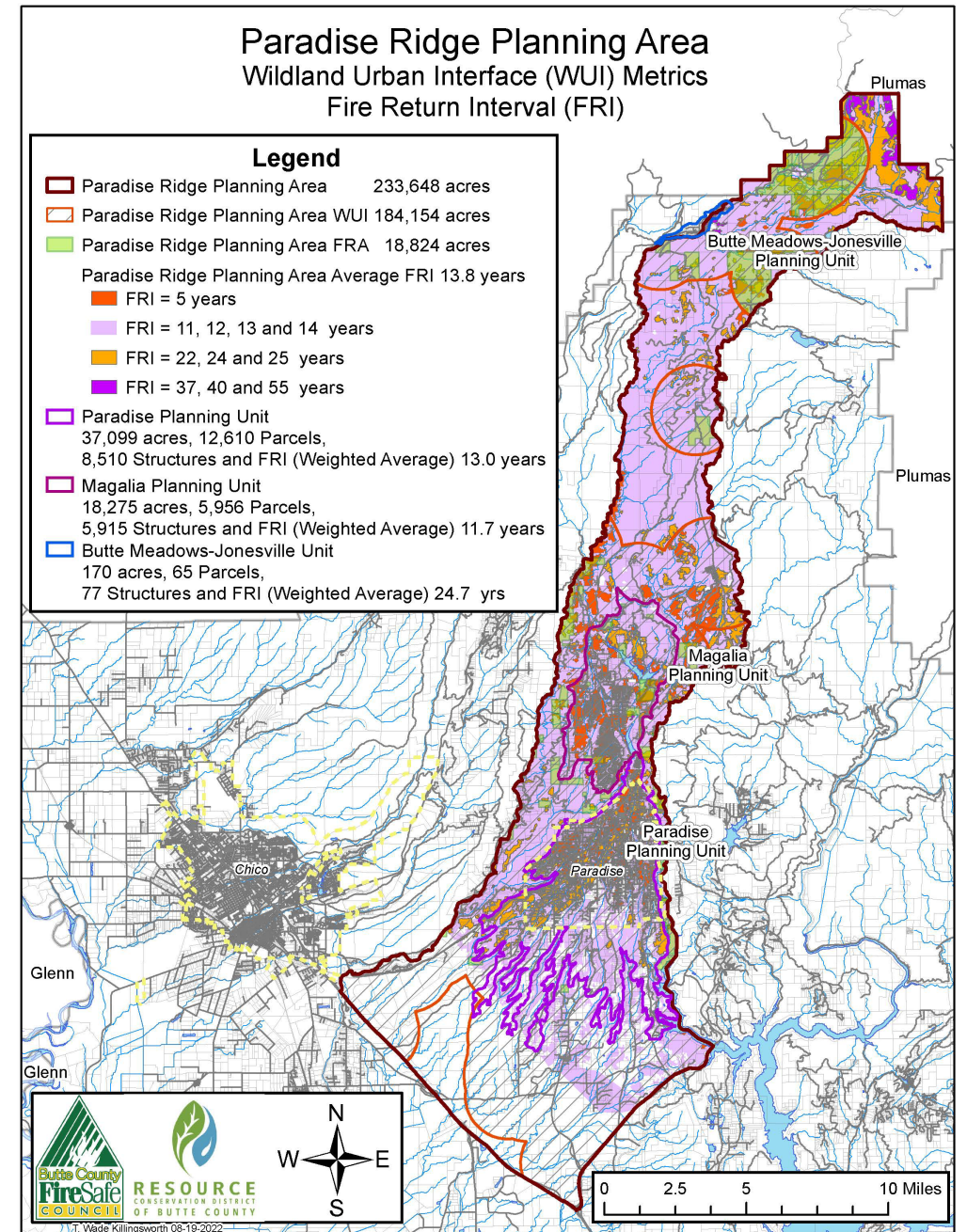


# Action Plan for the Ridge

- Paradise Planning Unit – 37,099 acres
- Avg Fire Return Interval – 13 years
- 12,610 parcels

## How are project goals set

- Based on Fire Return Interval
  - $18,500 \text{ acres} / 13 \text{ years} = 1,423 \text{ acres/yr}$
- Organized by planning area/unit
- Coincided with projects both past and future





# Projects and Programs

---

- No-Cost Chipper Service
- Residents Assistance Program
- Hazardous Tree Removal
- Grazing





---

# No-Cost Chipper Service

- Currently available in the Camp Fire and North Complex Fire Footprints
- No-cost to residents and property owners
- Enroll at [buttefiresafe.net](https://buttefiresafe.net) or call our office at 530-877-0984





---

# Residents Assistance Program

- Defensible Space Clearance (0-100ft)
- Residents must be low income, elderly, or disabled
- Available county-wide soon!
- Call our office at 530-877-0984 or visit our website at [buttefiresafe.net](http://buttefiresafe.net) to enroll





# Hazardous Tree Removal

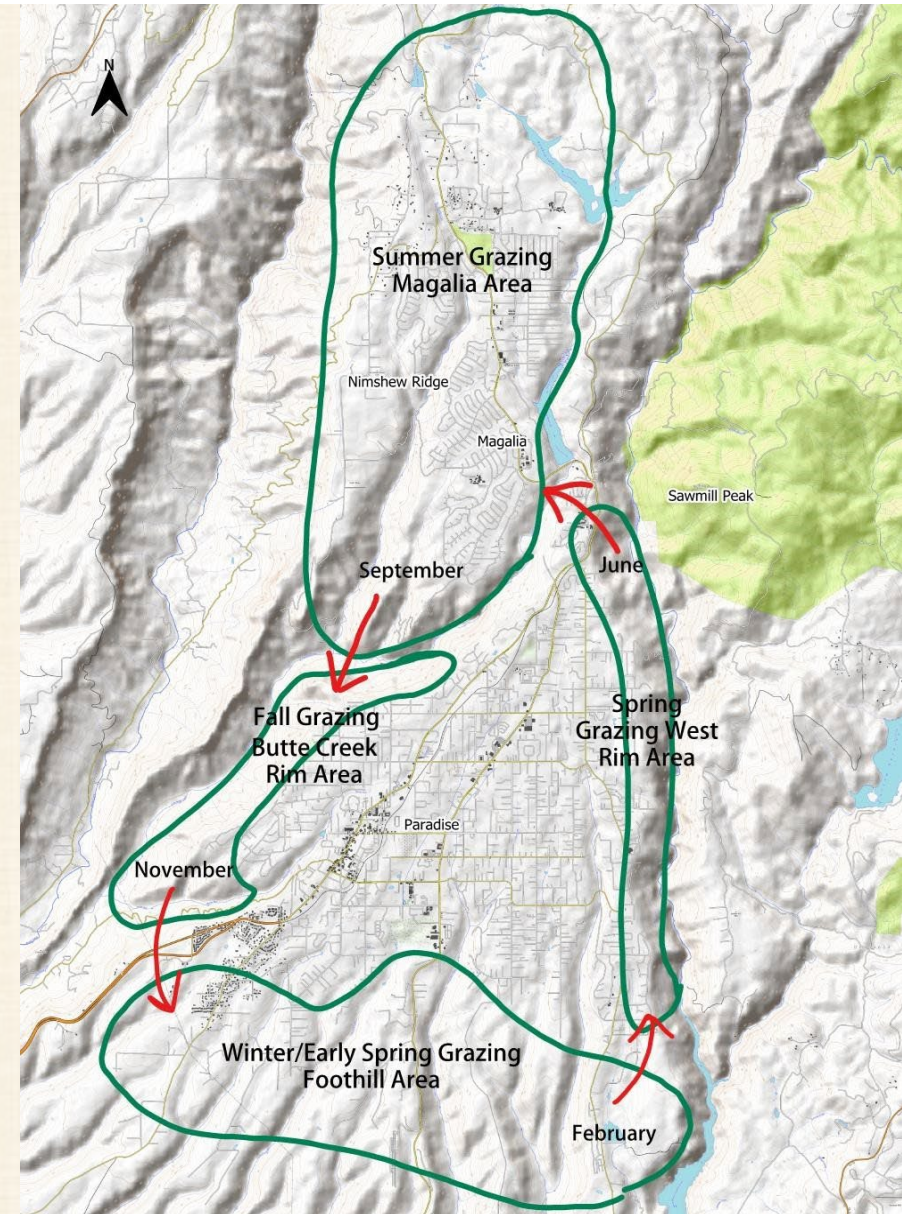
- **Town of Paradise and Magalia**
  - Hazardous Tree Removal for trees threatening standing, rebuild structures.
  - Landowners who are low-income, elderly, or disabled prioritized
  - Support in enrolling adjacent property owners
  - Funding provided by CAL FIRE and Paradise Rotary Foundation





# Grazing Program

- **Grazing Management Plan for the Ridge**
  - Goal: a minimum of 1,200 acres per year
  - Successful partnerships – PUSD, PPPOA, PID
  - Projects – Blue Oak, West Branch, Kunkle
  - Seeking funding for TOP programs





# Upcoming

- West Branch Maintenance
- Category 4 Tree Removal
- South Paradise Vegetation Management Program

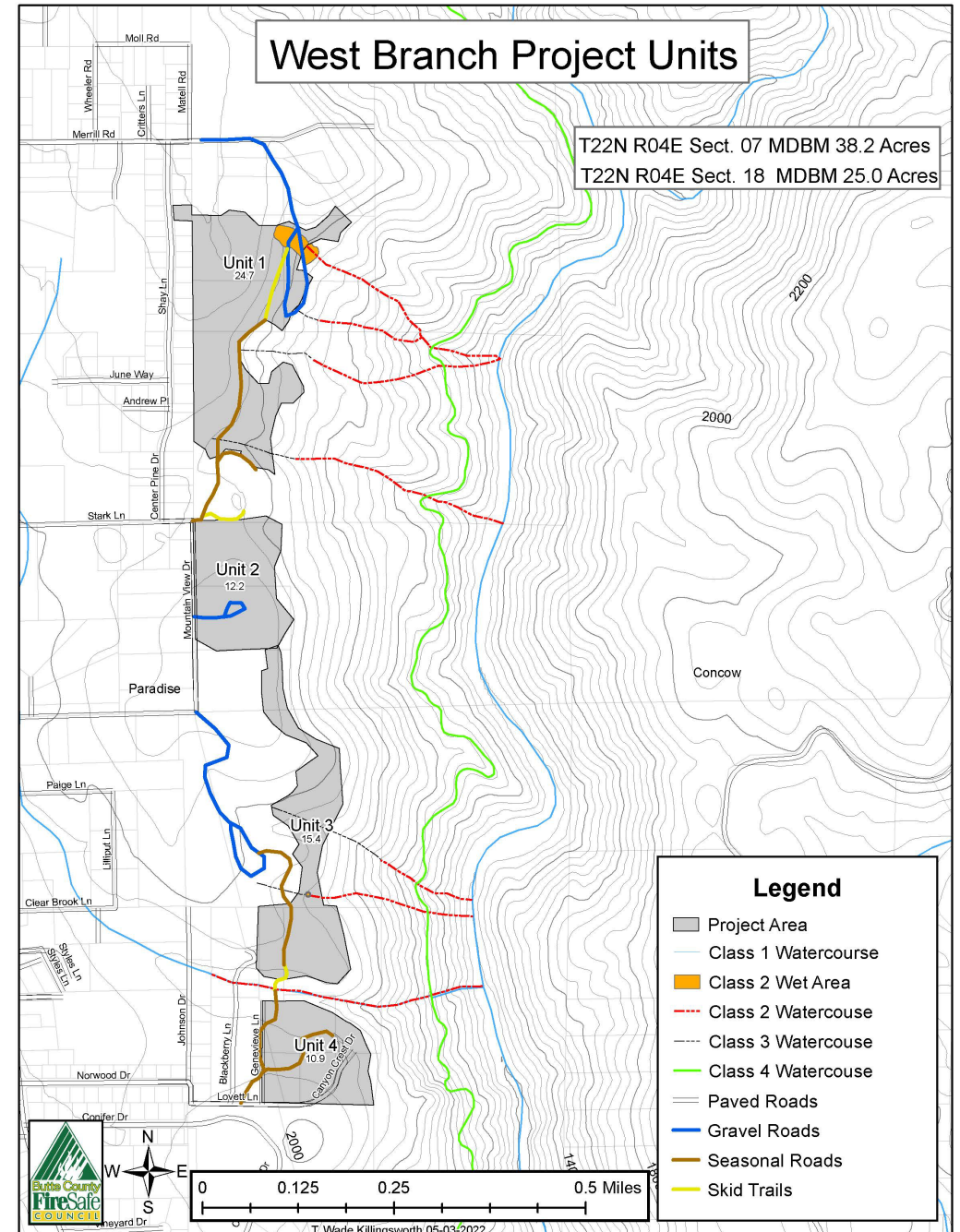




# Upcoming - West Branch Maintenance

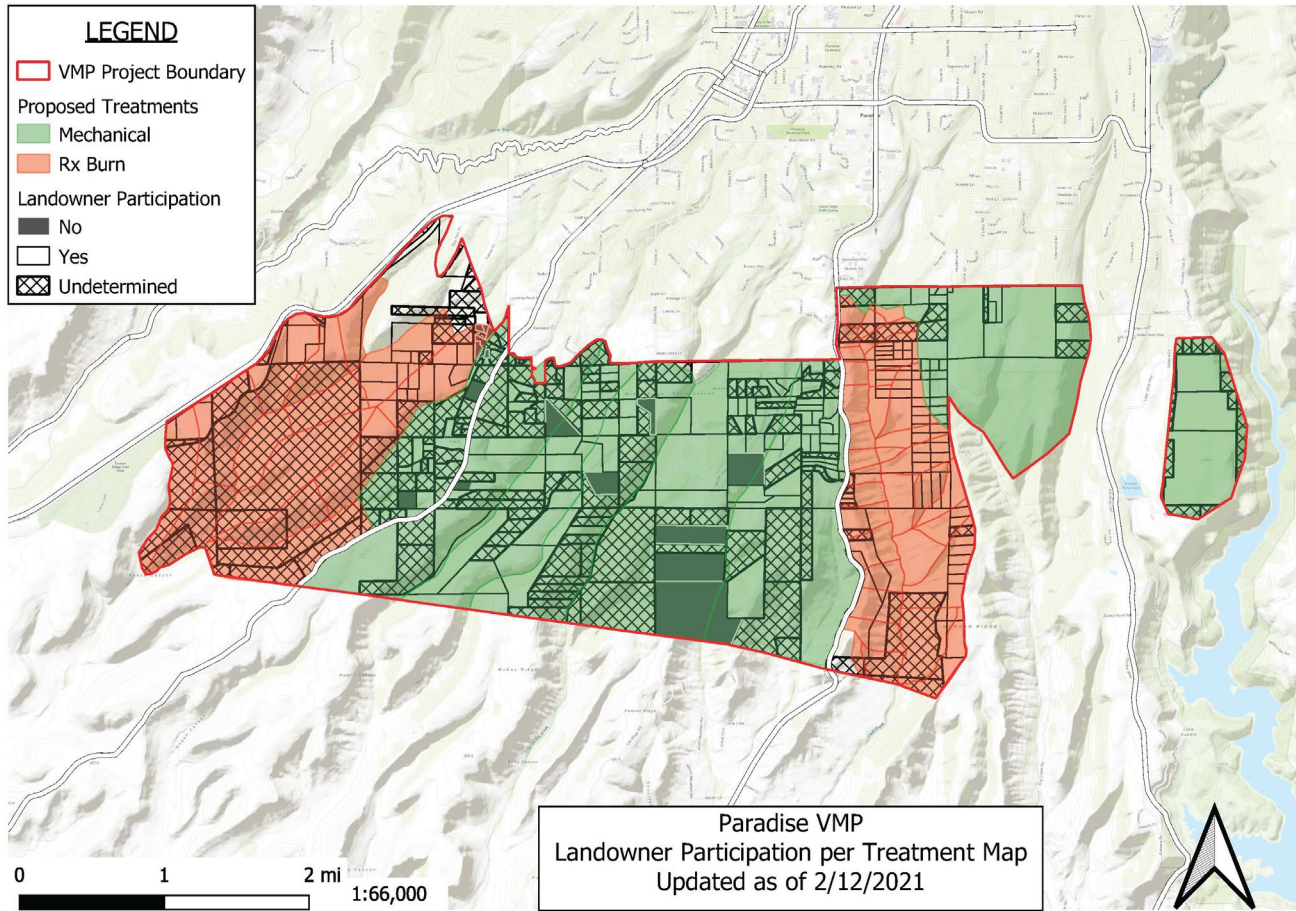
## 51 Acres

- 2022 – Hazard Tree Removal and Pile Burning
- 2023 – Mastication
- 2024 – Invasive Species Control





# Upcoming – South Paradise Vegetation Management Program (VMP)



**8,000 Acres**

- CAL FIRE Lead
- FSC Support
- Rx Fire



# Education and Outreach Efforts







**Ready's Happy Habitat  
Nomination #2:  
Casey Taylor**





**Doom the  
Broom  
complete  
for the year**



# Firewise USA Success

## 24 Firewise Communities





# 2024 School Programs Complete

- 2-3<sup>rd</sup> Grade School Programs

Assembly with CAL FIRE

- 4<sup>th</sup> and 5<sup>th</sup> Grade

Wildfire Ready Raccoon Program

- 6<sup>th</sup> Grade

Wildfire in the Foothills

- 700 students educated





# Open House Weekend

- **Paradise Garden Tour:**
  - June 1<sup>st</sup> and 2<sup>nd</sup>
- **Party in the Park:**
  - Saturday June 1<sup>st</sup>
- **Paradise Grazing Festival:**
  - Sunday June 2<sup>nd</sup>

# PARADISE GRAZING FESTIVAL

**NEW DATE: SUNDAY JUNE 2ND**

TERRY ASHE REC CENTER, PARADISE, CA  
10 AM - 4 PM

## GOAT ACTIVITIES

GOAT YOGA, PETTING ZOO, PHOTO BOOTH,  
HERDING DEMONSTRATIONS, AND STORYTIME  
WITH GOATS



**LIVE MUSIC**

**FOOD AND CRAFT  
VENDORS**



**SPONSORED BY:**



NOBLE  
ORCHARDS







We're Ready.



Support Grazing the R



ITEM	SUGGESTED
CREW NECK T-SHIRT	\$2
V-NECK WOMENS SHIRT	\$2
YOUTH CREW T-SHIRT	\$2
FESTIVAL PINT CUP	\$1
LEMONADE	\$1
SPARKLING WATER	\$1
BOTTLED WATER	\$1

















# Upcoming Events



COME & JOIN US FOR OUR



**END OF  
SCHOOL YEAR  
CELEBRATION  
FESTIVAL**

FREE ENTRY

**SATURDAY, JUNE 8 2024**

**8:30AM - 11:00AM: PANCAKE BREAKFAST**  
**10:00AM - 2:00PM FESTIVAL & VENDORS**



**Pancake Breakfast Fundraiser**

**8:30am to 11am**

For all ages!



Fresh Blueberries, eggs, sausages, juice and coffee  
\$10 Adults \$5 for kids 12 and under



**BOUNCE HOUSE - FACEPAINTING -  
PETTING ZOO - GAMES - COMMUNITY VENDORS**

**MAGALIA COMMUNITY PARK**  
13917 South Park Drive • 530-413-9158



# WALK WITH A FORESTER



**FOREST RANCH**

**TUESDAY, JUNE 18TH**

**8:30 - 11:30 AM**

**MEET AT THE FOREST RANCH  
POST OFFICE  
15517 NOPEL ROAD**

**BRING A WATER BOTTLE AND  
CLOSED TOED SHOES**

**SNACKS PROVIDED**

**JOIN REGISTERED PROFESSIONAL FORESTER  
KIERAN O' LEARY**





# Butte County Collaborative Tour

## Magalia Tour of Collaborative Forest Health Projects

- **Wednesday, June 26th**
- **9am – 12pm**
- Highlighting projects on USFS land in partnership with Konkow Valley Band of Maidu and Berry Creek Rancheria



**BUTTE COUNTY  
COLLABORATIVE GROUP**

Forming strategic partnerships for forest health, ecological restoration, and wildfire safety



# Ready at the Library Programs June 2024





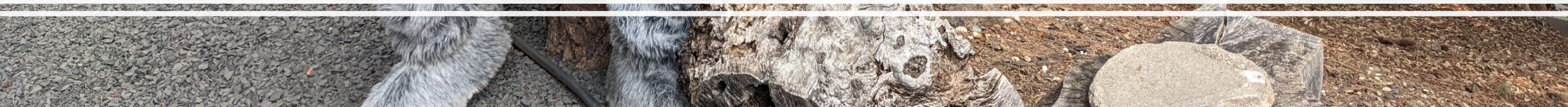


Firewise USA  
-Lauren de Terra





What is a Firewise Community vs. a Fire Safe Council?





# Fire Safe Councils

Has a 2-year MOU with the BCFSC.

Must host regular public meetings.

Typically, a larger area/whole community.

We can hold money and volunteer liability coverage for their projects/meetings.

Mostly leaders are long-time volunteers and close BCFSC contacts.





# Fire Safe Councils vs. Firewise USA Communities

Has a 2-year MOU with the BCFSC.	Independent of the BCFSC.
Must host regular public meetings.	Regular meetings (monthly or quarterly) are encouraged but not required.
Typically, a larger area/whole community.	Can be as small as 8 homes.
We can hold money and volunteer liability coverage for their projects/meetings.	Independent finances and liability coverage.
Mostly leaders are long-time volunteers and close BCFSC contacts.	Lots of new leaders and contacts emerging.





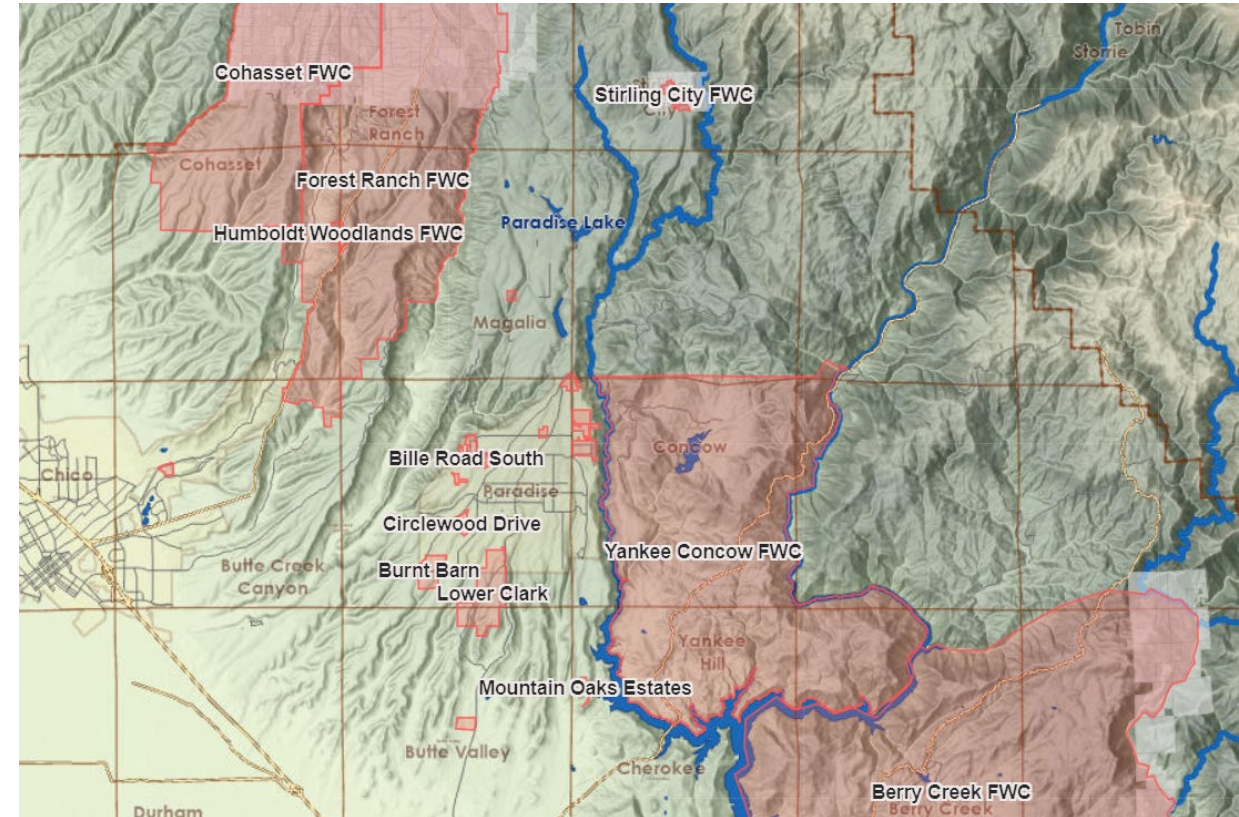
**FIREWISE USA**<sup>®</sup>  
RESIDENTS REDUCING WILDFIRE RISKS

- Program under the National Fire Protection Association (NFPA). All California Firewise communities were taken over by **CAL FIRE** last summer.
- CAL FIRE reviews and approves new community applications and issues certificates.
- The Firewise Communities program was created in 2002. Huge growth starting in 2022. Insurance discounts are driving new communities.
- Goal to minimize wildfire risk to private property.
- Promotes neighborhood cooperation and creates a framework for action.

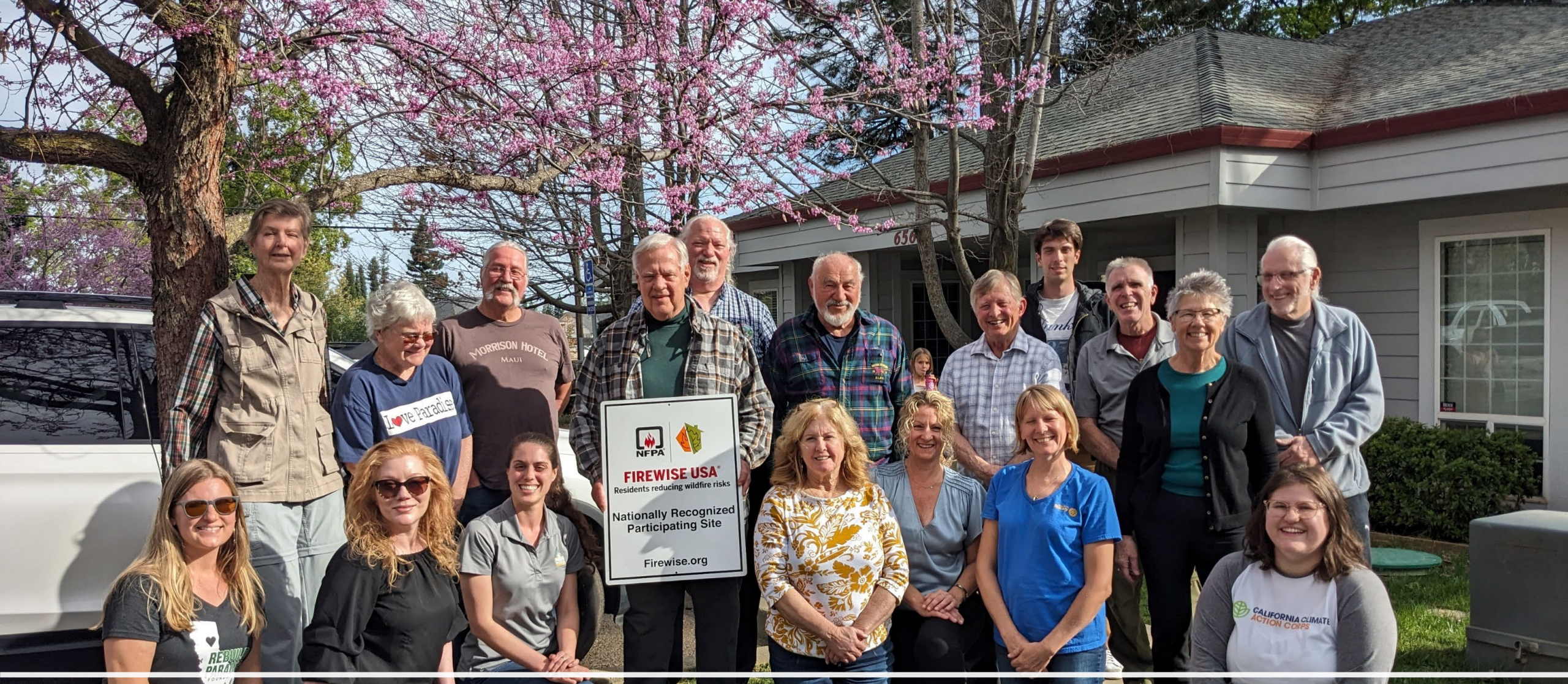


# Approx 800 Firewise USA communities in California.

## 24 “In Good Standing” Communities in Butte County

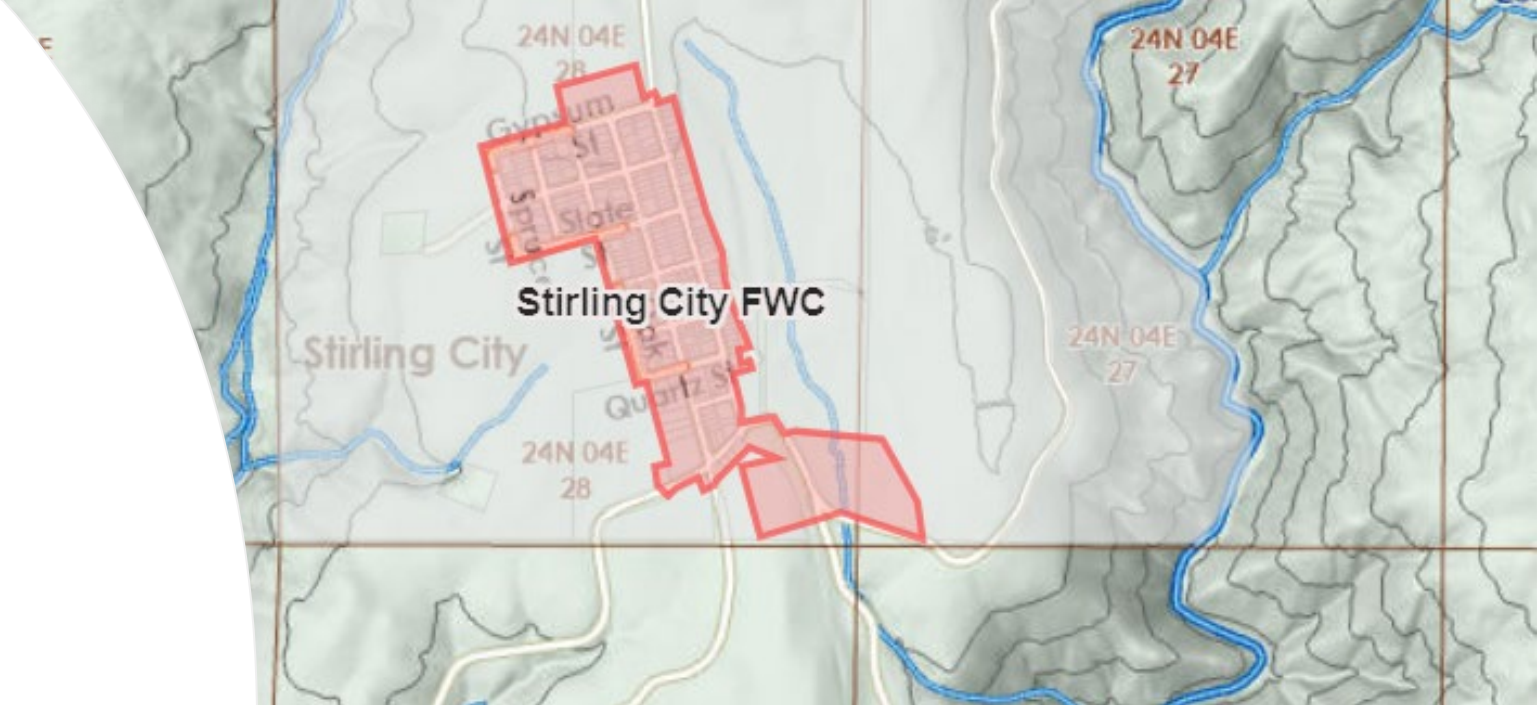






# Paradise Ridge Firewise USA Communities





# Stirling City

---



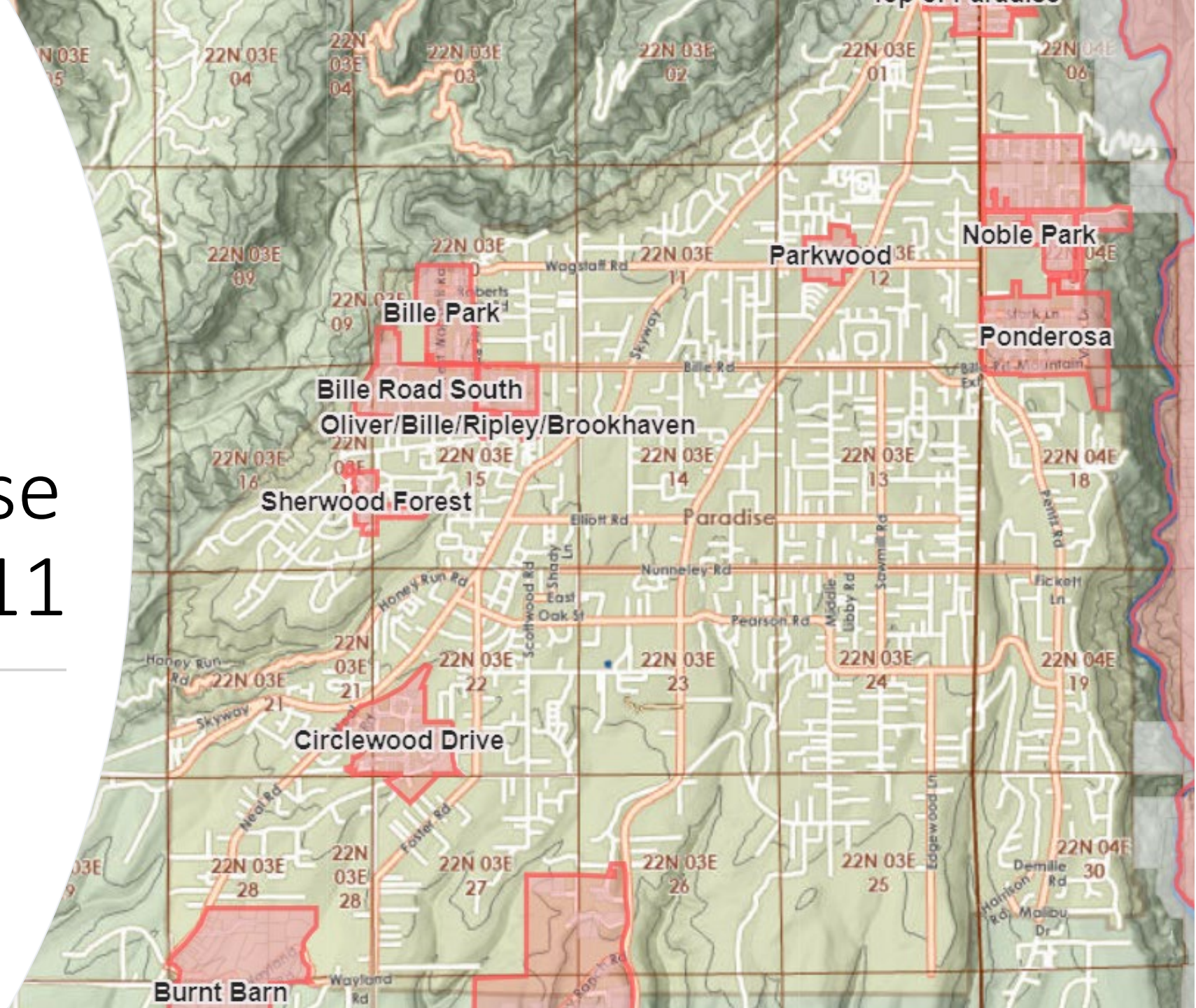


# Troy Estates, Magalia





# Town of Paradise Communities: 11



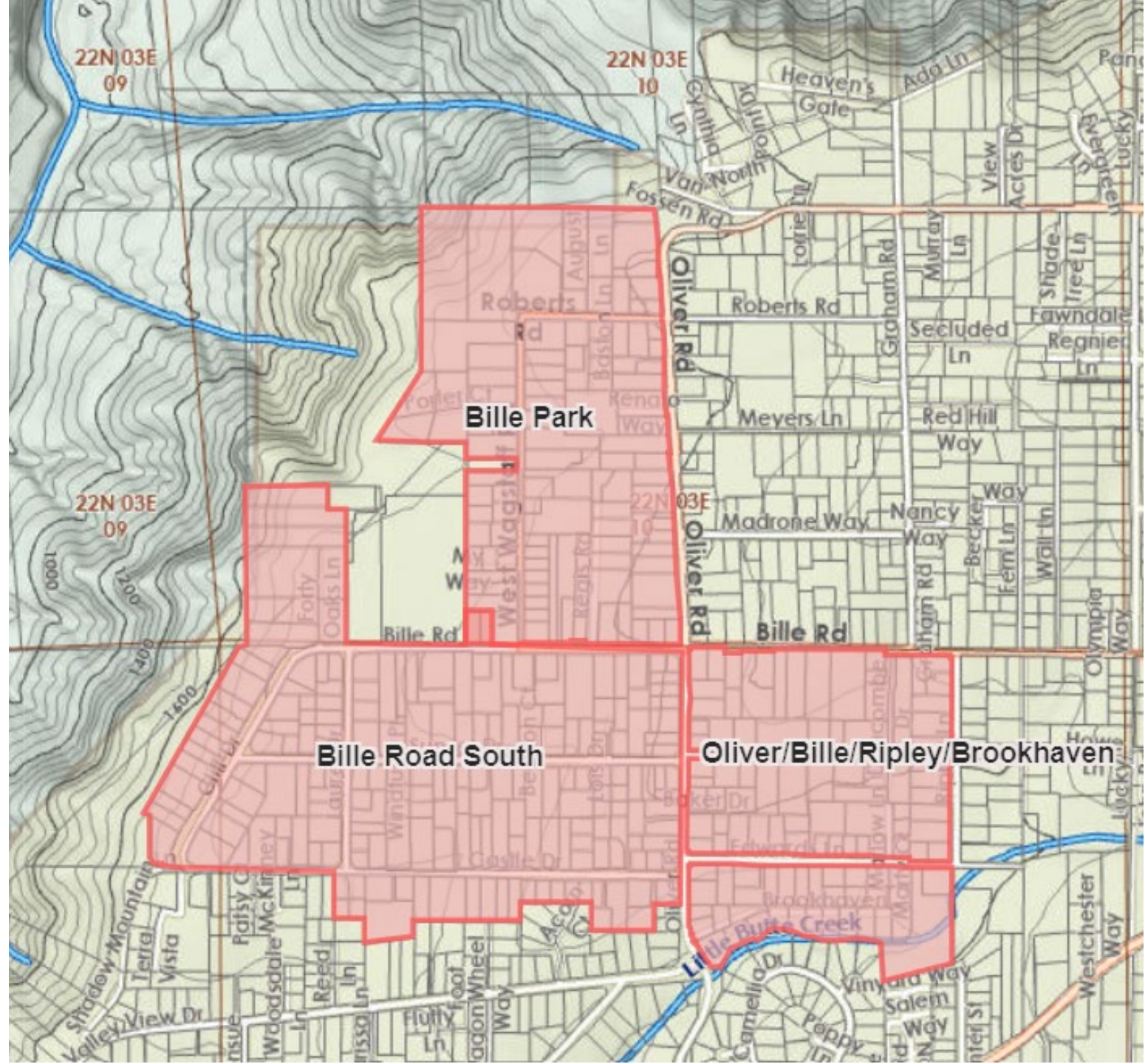


# Community Size

Minimum: 8

Maximum: 2,500

Dwelling unit = Existing lived in structure. No businesses or under construction houses included in count. Trailers/Mobile homes included.





# View Firewise USA community map on the BCFSC website.

**Buttefiresafe.net >> Programs >> Firewise USA**



The screenshot shows a web browser window with the URL [buttefiresafe.net](http://buttefiresafe.net). The page features a dark green header with the text "KNOW YOUR ZONE! Access the Butte County warning and evacuation map HERE" in yellow. Below the header is a navigation menu with links: "BE READY, BUTTE!", "ABOUT US", "SUPPORT US", "PROGRAMS", "RESOURCES", and "IN MY NEIGHBORHOOD". A logo for "Butte County FireSafe" is visible on the left. Below the navigation menu is a link for "CONTACT US & PROGRAM INTAKE FORM". The main content area has a dark blue background with the text "BUTTE COUNTY FIRE SAFE COUNCIL" in large white letters. Below this, it states: "We are a grassroots, 501(c)3 non-profit, community organization. Our work is entirely funded through grant awards and donations from our community." At the bottom, there is a "DONATE NOW!" button and an icon of a hand holding a heart.



# Steps to Certification

- Set up a meeting with the Butte County Fire Safe Council.
- Determine community boundary and get a draft map.  
*We provide guidance on where to draw boundaries based on other communities, geography, HOAs ect.*
- Gather support from neighbors and form a committee.  
*2-5 people recommended.*



# Steps to Certification

4) Schedule a neighborhood **risk assessment** walk with the BCFSC.

5) Create a 3-Year Neighborhood Action Plan.

*\*Required template and topics.*

6) Create an account in the Firewise Portal and upload the following:

- Required documents
- Volunteer hours from the past year
- Fuels removed





The risk assessment does not replace or have anything to do with the Town of Paradise defensible space inspections.

Individual properties are not analyzed or reported.

Assessment findings will not be shared to insurance or the Town to be part of inspection data.







**FIREWISE USA<sup>®</sup>**  
Residents reducing wildfire risks

## Annual Action Plan Categories

1. Education & Outreach
2. Home Hardening
3. Fuels Reduction/Defensible Space
4. Evacuation Planning & Preparedness



# Post-certification



- Share Firewise USA status and action plan with neighbors.
  - Share certificate to all residents.
  - Host a Firewise meeting or gathering.
- Join BCFSC monthly Firewise meetings and their local Fire Safe Council meetings.



# Maintain “In Good Standing” Status

- Track volunteer hours and financial investment.  
Minimum Requirement:  
1 hour per dwelling unit per year
- **Activities that count towards investment:**
  - Work on individual property.
  - Work in common areas.
  - Any money spent on wildfire risk reduction.
- Submit Annual Renewal in the Firewise Portal every November.
- Share new certificate annually with residents for insurance.





# Most are already doing the work!





# **Leader/Committee Responsibilities**

New **Risk Assessment** Required every 5 years.

New **Action Plan** Required every 3 years.

Volunteer hours and expenses submitted annually.



# Benefits

---

- Save money through insurance discounts.
- Improve collective safety and preparedness.
- Build community and increase comradery and communication.
- Develop a framework for action to motivate neighbors to work towards a common goal with measurable targets.
- Recognition and increased support from the Butte County Fire Safe Council, CAL FIRE, and the Town of Paradise.





# Frequently Asked Questions


**Is participation mandatory? Do all my neighbors need to participate for us to remain In Good Standing?**

*No. The program takes the overall hours/investment of the group. Your community will not lose certification for non-participants.*

**Will I get an insurance discount?**

*Yes! Under the Safer From Wildfires Program with the CA Department of Insurance, living within a Firewise USA is a guaranteed home insurance discount if your policy covers wildfire.*





## Frequently Asked Questions


### **How do I track my neighbors' volunteer hours and expenses?**

*Each community is different. It is up to the leader and committee to communicate methods for tracking and collect hours from their community.*

*(Paper sheets, email, online Google form ect.)*

### **Can I change the map and community boundary later?**

*Yes, but you would need to fill out a new risk assessment and map. Better to create an adjacent community than expand the boundary later.*





# Frequently Asked Questions

**Will my community get rejected if it is too high risk or neighbors do not take care of their property?**

*No! No community will be declined because of risk or assessment findings. If the paperwork is correctly filled out in the application, it cannot be rejected.*

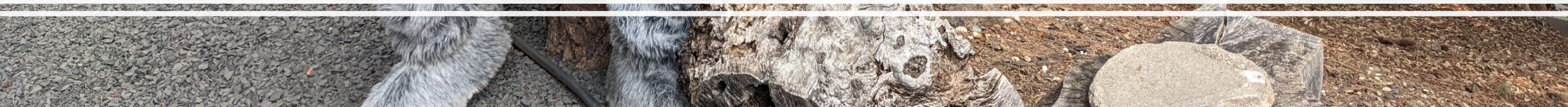
**Can I cut around neighbors who don't participate or include people I know outside my area in the community.**

No, the Firewise boundary must be a continuous area. Include everyone whether you know them or not. If they don't want to participate, they don't have to.





Questions?





# Contact Us

BCFSC Office: 530-877-0984

[www.buttefiresafe.net](http://www.buttefiresafe.net)

**Taylor Nilsson**

**Executive Director**

[TaylorN@buttefiresafe.net](mailto:TaylorN@buttefiresafe.net)



**Lauren de Terra**

**Butte County Firewise USA Coordinator**

[Laurendeterra@buttefiresafe.net](mailto:Laurendeterra@buttefiresafe.net)

